

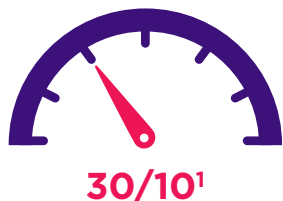
Key Facts Sheet

Speedweb Fixed Wireless



Important information about the Fixed Wireless plan options available with Speedweb.

Speed | How fast?



¹ This indicates the maximum possible speed (Mbps) you can receive off-peak (11pm-7pm).

Price | How much?

\$59/month
100GB Data

\$69/month
Unlimited Data

Use | What can I do with it?



1 - 2 users
at the same time



1 - 4 users
at the same time

- ✓ Emails + browsing
- ✓ VoIP phone
- ✓ Online gaming
- ✗ HD video streaming
- ✗ Large file downloads
- ✗ UHD/4K videos

- ✓ Emails + browsing
- ✓ VoIP phone
- ✓ Online gaming
- ✓ HD video streaming
- ✓ Large file downloads
- ✓ UHD/4K videos*

Notes

Technical Limitations

- Fixed Wireless services will not work during power failures. This service does not include a battery backup power supply for Fixed Wireless equipment or customer equipment. During a power outage your VoIP phone will not function, including calls to emergency services.
- Your speed or performance may be reduced by a range of other factors such as your router, internal house wiring, wifi interference, environmental conditions including weather events, and line of sight to the premises. Talk to us about what may be causing your slow speeds and we can suggest ways to improve the speed or performance.

Medical Alarms / Security

Before acquiring an Fixed Wireless service, you should find out if any medical or security alarm services you want to use are compatible with a Fixed Wireless service. If any such services are not compatible, you should check with the provider to see what alternatives are available.

For services activated from October 2021. This document may be periodically updated without notification. You can always retrieve the most current version of this document from our website at <https://speedweb.com.au>.

* 2 simultaneous streams at a time.